

## Case Study

# Chiltern Place London



Client

**Ronson Capital Partners**

Main Contractor

**Mace**

Architect

**PLP**

Service Provided

**Design & Fabrication**

Year Completed

**2017**

Building Use

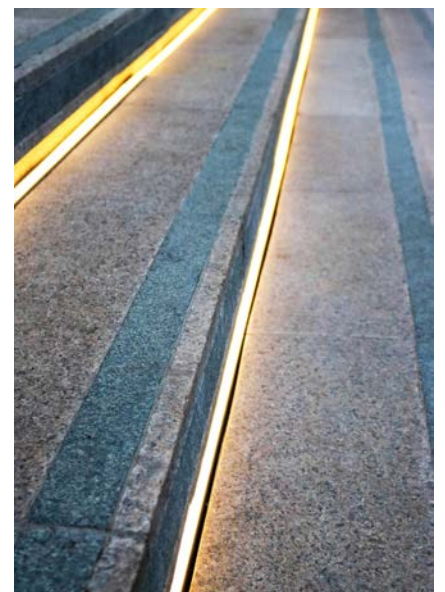
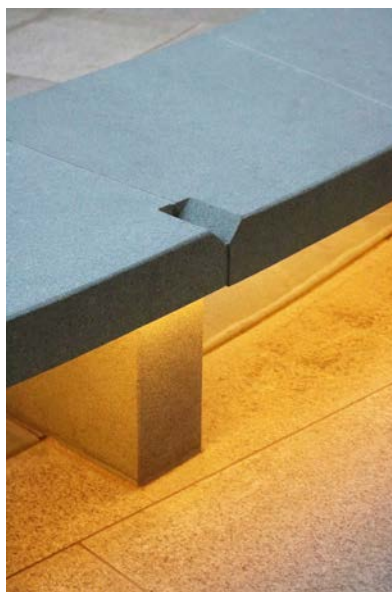
**Apartments & Offices**

The exclusive Chiltern Place is one of the capital's most enviable addresses and one of London's landmark buildings. Located in Marylebone, London W1, Chiltern Place offers exceptional homes and offices in a highly sought after location with panoramic views across the capital. With 12 storeys of offices and 55 luxury apartments it's residence have the benefit of 24 hour concierge, a gym, a bar, a cinema, a library and meeting rooms.

- Our remit was to supply the external stone work at the entrance of the building, which occupies a busy corner plot next to Paddington Street Gardens.
- The landscape architects provided us with the designs, which our CAD technicians produced technical drawings from.
- Three materials were specified.



- The majority of paving was produced from Light Beige sandblasted granite in a range of sizes, however part of the design was curved. These pieces were produced at our partner factory and finished onsite.
- The steps were fabricated from the same Light Beige granite with Leaf Green granite inserts in a sandblasted finish.
- The same Leaf Green granite was used to create the benches.
- Portuguese Amarello Honed granite was used for copings under the railings next to the residential entrance.
- The granite was delivered to our Cheshire facility, where some was re-carved due to some last minute design changes.
- Further modifications were made by our team onsite.
- Deliveries to site finished in August 2017.



Rockford  
Road Beta  
Middlewich  
Cheshire CW10 0QF  
Tel: 01606 841 000  
sales@rockfordcompany.co.uk  
www.rockfordcompany.co.uk